

## 2006 OWNER'S MANUAL

Thank-you for buying a Headstrong performance light set. Every component of your system has been designed to provide maximum performance and durability. Please read the owner's manual carefully to ensure proper operation and component care.

### **BEFORE USING YOUR LIGHT SET FOR THE FIRST TIME, PLEASE READ AND UNDERSTAND ALL OF THE SAFETY PRECAUTIONS**



#### **Only use the light on a moving bike**

Do not use Headstrong Lights or any other high output bike light for extended periods while stationary as the lamp head can become very hot.

#### **Always unplug the battery when not in use**

The lamp can become very hot if accidentally turned on while in a confined space.

#### **Always bring a secondary light source when riding at night**

Although the light system is extremely reliable, there is always a chance that you will need a back-up light. Have a secondary light source so you can get to your destination safely.

#### **Always ride with extra caution at night**

Visibility is always reduced at night, regardless of the lighting power used. Slow down, take extra care and always ride in control.

#### **Only use the supplied wall transformer/charger/batteries**

Substitution of any component may result in damage to your light set.

#### **Never immerse any of the components in water**

Headstrong Lights are water resistant and will withstand rain, mud and snow. However, they are not waterproof and should never be immersed in water.

#### **Never plug the wall transformer or charger directly into the lamp as this could result in component damage**

#### **Never attempt to disassemble any of the components**

## SPECIFICATIONS:

### Lamp Head

- 20 Watt, 12 Volt high intensity halogen bulb
- 30 degree beam angle
- Water resistant construction
- Anodized aluminum body
- Integrated LampClamp mounting clamp

### Controller

- 9 / 14 / 20 Watt light output control
- Microprocessor controlled
- Soft start (turns on slowly to maximize bulb life)
- 10 minute low battery warning
- Auto shut-off at the end of the run prevents battery damage

### Power Pack

- |              |            |
|--------------|------------|
| • Ride times | <u>XLA</u> |
| 20 Watts     | 1:40       |
| 14 Watts     | 2:00       |
| 9 Watts      | 3:00       |

*Ride times include ten-minute reserve at 9 Watts*

*Ride times are for new batteries at room temperature.*

*Times will vary with ride-specific conditions.*

### Charger

- Three-Stage fully automatic SLA charger
- Charge times XLA: 6 hours
- Charge complete indicator
- Automatically switches to trickle mode when the battery is charged
- Fully protected against accidental misuse

## SYSTEM INSTALATION:

### Lamp Head

The lamp head is designed to clamp on the handlebars next to the gooseneck. Open the clamp by turning the nylon thumbscrew counter-clockwise; tighten by turning the thumbscrew clockwise. Do not over tighten -- you should be able to adjust the lamp up/down while you are on the trail.

### Controller

The switch can be placed anywhere you like, but it is designed to mount on the handlebars. The short cable with the right-angled connector plugs into the lamp. The long cable plugs into the battery. Velcro straps are provided to secure the cable in place.

### Power Pack

The power pack fits under the top tube at the seat tube intersection. Place the pack with the soft surface against the bottom of the top tube. Wrap the two long straps over the top tube, through the plastic loops and back over the top tube (thread the straps **under any cables**). The small strap at the back of the back of the pack loops around the seat tube as shown.



## OPERATION:

A single, short press turns the light on/off. To cycle through the three levels (9W / 14W / 20W), continuously hold the button down. Release the switch when you get to the light level you want. Once the light level is set, you can turn the light off and that light setting will be maintained when turned on again.

When there are approximately (10) minutes remaining, the light will flash and dim to 9-Watts. If you are using the 9-Watt setting, you will only see a flash. After the (10) minute reserve time is up, the light will shut off.

The ride and warning times will vary slightly with each unit. Also, the ride/warning times will be reduced in colder temperatures.

*Caution: Once the light turns off, you are out of light. Do not plan a ride that is as long as the maximum light run – leave yourself some spare time to finish your ride safely. We highly recommend carrying a secondary light source.*

## POWER PACK CARE:

*Always re-charge your Power Pack as soon as possible after use  
Only use the charger at room temperature*

### Charger Set-Up

1. Plug the wall transformer into a wall socket.
2. Plug the cable from the wall transformer into the battery charger.
3. The cable from the battery charger plugs into the battery.

### Charger Operation

When Steps 1 and 2 of the Charger Set-up are performed (but not Step 3), the green “Ride When Lit” light should be on. Once the charger is plugged into the battery, the green light will go off. It will come on again once the battery is fully charged. The battery can be safely left on the charger after the “Ride When Lit” light comes on – it automatically switches to a trickle mode.

For a fully discharged battery, charge times are approximately as follows:

XLA: 6 hours

### Charging Tips

- Always re-charge your Power Pack as soon as possible after using it.
- Do not interrupt the charging cycle – the battery may not charge completely
- Always store your Power Pack in a fully charged state
- You can charge the battery regardless of the state of discharge. Even if you go for a short ride, it is recommended that the Power Pack be re-charged.
- If you don't plan to use the Power Pack for a long period of time, charge it completely, remove it from the charger and store in a cool (not cold!) place. Periodically put the battery on the charger to keep it topped up.
- Only use the supplied equipment to charge the Power Pack

## LAMP HEAD CARE:

The lamp head requires no maintenance. It comes with a clear anodized coating that will prevent corrosion and protect it from scratches. Do not use an abrasive product to clean the Lamp Head as you may remove the coating.

The halogen bulb supplied with your light system will last many years under normal use. However, it may eventually burn out or become damaged due to impact. Replacement bulbs are available from Headstrong Lights.

You can choose to return the lamp head to Headstrong to have a new bulb installed (see Warranty). Alternatively, follow the Bulb Change instructions at the end of this manual.

## CONTROLLER CARE:

The controller requires no maintenance.

*The controller cables should never be subjected to stress. Route the cables such that there is slack when you turn your handlebars. Also, care should be taken to always hold the connectors when inserting or removing the plugs. Never grab the cables and pull.*

## BULB CHANGE

To ensure proper fit and maximum performance, only use Headstrong bulbs  
Do not use any lubricants when installing a new bulb  
A small, flat screwdriver is required to change the bulb

### Removal:

- Clamp the lamp head on your handlebars with the bulb facing up
- Find the small notch in the retaining ring and gently pry it out of the groove with the screwdriver (**Figure 1**).
- Remove the rest of the ring by hand in a spiral fashion
- Gently pry the o-ring out with the tip of the screwdriver
- Remove the lamp head from the handlebars. Hold the body firmly, and shake downwards until the bulb comes out of the housing
- Hold the socket firmly while you remove the bulb

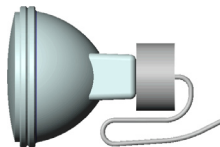
### Installation:

- Hold the socket firmly and push in the new bulb. Then push the assembly into the housing. Ensure that the wires are as shown in **Figure 2**.
- Your new bulb will come with an “o-ring” – always use the o-ring that comes with the bulb to ensure a proper fit.
- Place the o-ring in the lamp head (**Figure 3**).
- Separate the coils of the retaining ring and insert one end into the lamp head groove. Wind the ring into the groove as shown in **Figure 4**. Always ensure that the ring is seated in the groove before progressing. You may have to press down on the ring to slightly compress the o-ring during installation. The screwdriver can be used, but be careful not to damage the bulb.
- Gently press all around the ring with the screwdriver to ensure that it is seated. Masking tape can be placed on the blade tip to prevent scratches (**Figure 5**).

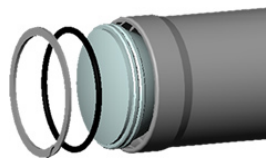
#### 1. Ring Removal



#### 2. Wire Routing



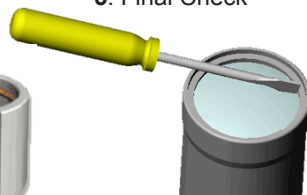
#### 3. Installation Order



#### 4. Ring Installation



#### 5. Final Check



## WARRANTY:

Your Headstrong Light warranty covers manufacturer's defect for a period of (1) year after the purchase date. The bulb is warranted for (30) days. The warranty does not cover damage due to accidents and/or misuse.

### After one year

Headstrong Lights are designed to last many years. If you have any problems after the end of the warranty period, we will endeavor to repair/replace at as fair a cost as possible. Our main objective is to get you riding again.

### Shipping Policy for Returns

The owner will pay shipping to the factory. We will pay for return shipping.

### Bulb replacement Policy

You may return your lamp head to us for bulb replacement. We will only charge you for the new bulb.

For all Service Issues contact Headstrong Lights before sending any components back for service.

e-mail: [service@headstronglights.com](mailto:service@headstronglights.com)